

# itop Teemip安装

itop2.3.3-3159 环境 安装Teemip插件

fjcn 170415

下载地址

<https://sourceforge.net/projects/teemip/files/teemip%20-%20an%20iTop%20module/2.1.1/TeemIp-Module-2.1.1.zip/stats/timeline>

如上面不行，可直接把下面地址复制到浏览器

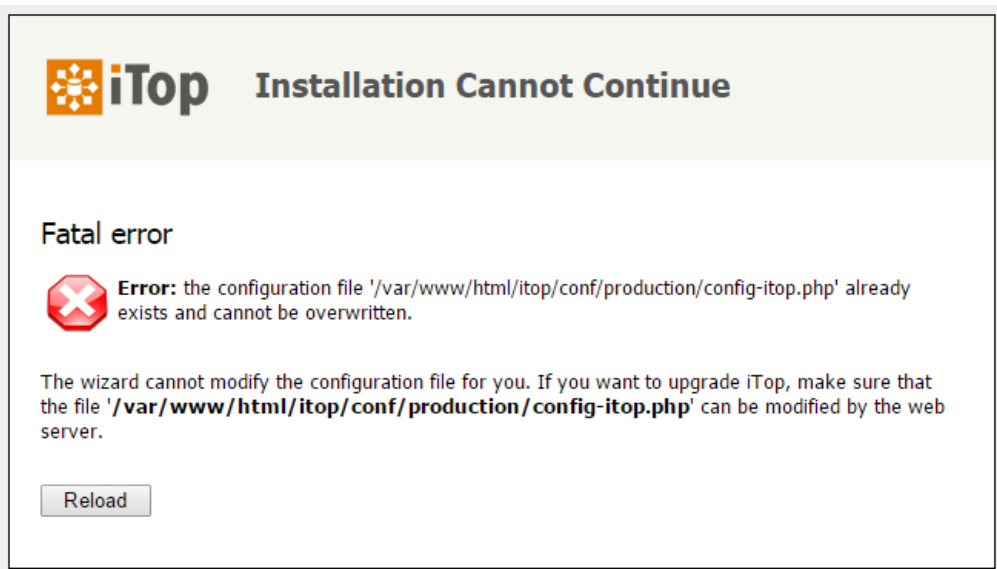
<https://sourceforge.net/projects/teemip/files/teemip%20-%20an%20iTop%20module/2.1.1/TeemIp-Module-2.1.1.zip>

```
unzip TeemIp-Module-2.1.1.zip
cd web
cp -r extensions /var/www/html/itop
```

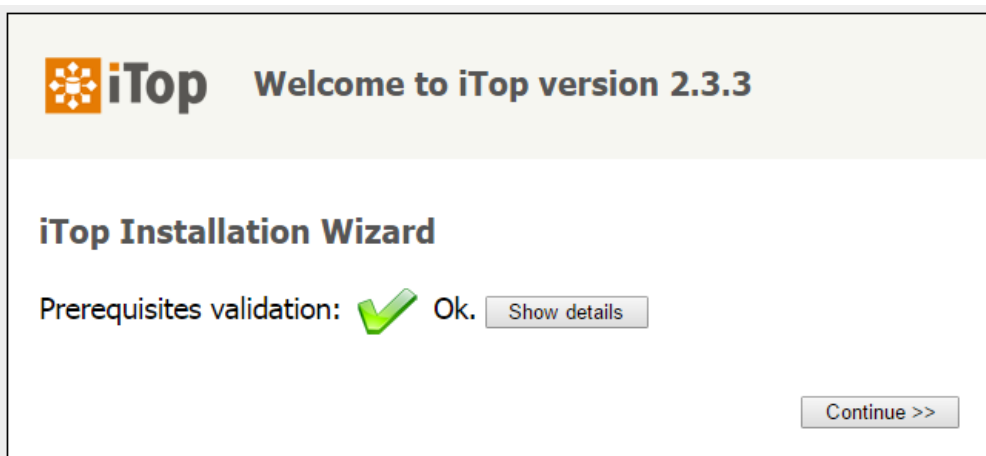
itop Teemip安装

重新安装配置ITOP

<http://192.168.1.119/itop/setup/>



**chmod 755 /var/www/html/itop/conf/production/config-itop.php**





## iTop Install or Upgrade choice

### What do you want to do?

- ☐ Install a new iTop
- ☒ Upgrade an existing iTop instance

Location on the disk:

#### Database Server Connection

Server Name:  E.g. "localhost", "dbserver.mycompany.com" or "192.142.10.23"

Login:  The account must have the following privileges on the database:  
SELECT, INSERT, UPDATE, DELETE, DROP, CREATE, ALTER,  
CREATE VIEW, SUPER, TRIGGER

Password:

**Warning:** MySQL server's max\_allowed\_packet (1048576) is not big enough. Please, consider setting it to at least 2097652.

#### Database

Database Name:

Use a prefix for the tables:

☒ Backup the iTop database before upgrading

Save the backup to:

✓ mysqldump is present: mysqldump Ver 10.14 Distrib 5.5.52-MariaDB, for Linux (x86\_64)  
46.50 Gb free in /var/www/html/itop/data

<< Back

Next >>



## iTop Upgrade Information

### Information about the upgrade from version 2.3.3.3159 to 2.3.3.3159

✓ The datamodel will be upgraded from version 2.3.0 to version 2.3.0.

<< Back

Next >>

**iTop**

## Miscellaneous Parameters

### Additional parameters

#### Application URL

URL: 

Change the value above if the end-users will be accessing the application by another path due to a specific configuration of the web server.

#### Path to Graphviz' dot application

Path: 

▶ Graphviz is required to display the impact analysis graph (i.e. impacts / depends on).

✔ dot is present: dot - graphviz version 2.30.1 (20150306.0020)

[<< Back](#)[Next >>](#)**iTop**

## Miscellaneous Parameters

### Additional parameters

#### Application URL

URL: 

Change the value above if the end-users will be accessing the application by another path due to a specific configuration of the web server.

#### Path to Graphviz' dot application

Path: 

▶ Graphviz is required to display the impact analysis graph (i.e. impacts / depends on).

✔ dot is present: dot - graphviz version 2.30.1 (20150306.0020)

[<< Back](#)[Next >>](#)

**iTop**

## Configuration Management options



The options below allow you to configure the type of elements that are to be managed inside iTop.

- ☒ **Configuration Management Core**  
All the base objects that are mandatory in the iTop CMDB: Organizations, Locations, Teams, Persons, etc.
- ☒ **Data Center Devices**  
Manage Data Center devices such as Racks, Enclosures, PDUs, etc.
- ☒ **End-User Devices**  
Manage devices related to end-users: PCs, Phones, Tablets, etc.
- ☒ **Storage Devices**  
Manage storage devices such as NAS, SAN Switches, Tape Libraries and Tapes, etc.
- ☒ **Virtualization**  
Manage Hypervisors, Virtual Machines and Farms.

&lt;&lt; Back

Next &gt;&gt;

**iTop**

## Service Management options



Select the choice that best describes the relationships between the services and the IT infrastructure in your IT environment.

- ☒ **Service Management for Enterprises**  
Select this option if the IT delivers services based on a shared infrastructure. For example if different organizations within your company subscribe to services (like Mail and Print services) delivered by a single shared backend.
- ☐ **Service Management for Service Providers**  
Select this option if the IT manages the infrastructure of independent customers. This is the most flexible model, since the services can be delivered with a mix of shared and customer specific infrastructure devices.

&lt;&lt; Back

Next &gt;&gt;



## iTop Tickets Management options



Select the type of tickets you want to use in order to respond to user requests and incidents.

- ☐ **Simple Ticket Management**  
Select this option to use one single type of tickets for all kind of requests.
  - ☒ **Enhanced Customer Portal**  
Replace the built-in customer portal with a more modern version, working better with hand-held devices and bringing new features
- ☒ **ITIL Compliant Tickets Management**  
Select this option to have different types of ticket for managing user requests and incidents. Each type of ticket has a specific life cycle and specific fields
  - ☒ **User Request Management**  
Manage User Request tickets in iTop
  - ☒ **Incident Management**  
Manage Incidents tickets in iTop
  - ☒ **Enhanced Customer Portal**  
Replace the built-in customer portal with a more modern version, working better with hand-held devices and bringing new features
- ☐ **No Tickets Management**  
Don't manage incidents or user requests in iTop

<< Back

Next >>



## iTop Change Management options



Select the type of tickets you want to use in order to manage changes to the IT infrastructure.

- ☐ **Simple Change Management**  
Select this option to use one type of ticket for all kind of changes.
- ☒ **ITIL Change Management**  
Select this option to use Normal/Routine/Emergency change tickets.
- ☐ **No Change Management**  
Don't manage changes in iTop

<< Back

Next >>

**iTop**

## Additional ITIL tickets



Pick from the list below the additional ITIL processes that are to be implemented in iTop.

**Known Errors Management**

Select this option to track "Known Errors" and FAQs in iTop.

**Problem Management**

Select this option track "Problems" in iTop.

[<< Back](#)[Next >>](#)**iTop**

## Extensions



Select additional extensions to install. You can launch the installation again to install new extensions, but you cannot remove already installed extensions.

**Auto closure of Incident and UserRequest****Tickets synchronization via e-mail****Ticket Creation from Emails (Standard)****Network Management****IP Management****IPv6 Management****Dispatch of Incidents****Dispatch of User Request**[<< Back](#)[Next >>](#)

iTop is about to be upgraded into the **existing** database **itop23** on the server **localhost**.

Installation Parameters

- ⊕ Database Parameters
- ⊕ Data Model Configuration
- ⊕ Other Parameters

<< Back

Install !

iTop is about to be upgraded into the **existing** database **itop23** on the server **localhost**.

Progress of the installation

Updating database schema



<< Back

Install !

## Manual operations required

In order to complete the installation, the following manual operations are required:

- ▶ [Manual instructions for Tickets Management](#)

## Congratulations for installing iTop

Your backup is ready



[Download iTop-backup-2017-04-24.zip](#)



Stay in touch with the iTop community

Get the latest news about iTop: new features, online webinars, etc...




Be backed by the iTop experts.

Get enterprise grade support for your application, worry free upgrades, and more...



Whether you want get the most of your iTop installation, tailor iTop for your very own purpose or become an iTop guru...

[Enter iTop](#)



所有组织

欢迎

配置管理


**IP Management**

- ▶ IP Space
  - ▶ New IP object
  - ▶ Search for IP object
- ▶ IPv4 Shortcuts
  - ▶ Subnet Blocks
  - ▶ Subnets
  - ▶ IP Ranges
  - ▶ IP Addresses
- ▶ IPv6 Shortcuts
  - ▶ Subnet Blocks
  - ▶ Subnets
  - ▶ IP Ranges
  - ▶ IP Addresses

服务台

事件管理

欢迎 > 地理位置 > Bordeaux > IP Space

**IPv4 Objects**

IPv4 Subnet Block: 0

IPv4 Subnet: 0

IPv4 Range: 0

IPv4 Address: 0

▶ 创建一个新的 IPv4 Subnet Block

▶ 创建一个新的 IPv4 Subnet

▶ 创建一个新的 IPv4 Range


▶ 创建一个新的 IPv4 Address

▶ 搜索 IPv4 Subnet Block

▶ 搜索 IPv4 Subnet

▶ 搜索 IPv4 Range

▶ 搜索 IPv4 Address

**IPv6 Objects**

IPv6 Subnet Block: 0

IPv6 Subnet: 0

IPv6 Range: 0

IPv6 Address: 0

▶ 创建一个新的 IPv6 Subnet Block

▶ 创建一个新的 IPv6 Subnet

▶ 创建一个新的 IPv6 Range


▶ 创建一个新的 IPv6 Address

▶ 搜索 IPv6 Subnet Block

▶ 搜索 IPv6 Subnet

▶ 搜索 IPv6 Range

▶ 搜索 IPv6 Address

**Parameters**

Global IP Setting: 0

IP Range Usage: 0

IP Address Usage: 0

▶ 创建一个新的 Global IP Setting

▶ 创建一个新的 IP Range Usage

▶ 创建一个新的 IP Address Usage

▶ 搜索 Global IP Setting

▶ 搜索 IP Range Usage

▶ 搜索 IP Address Usage



所有组织

欢迎

配置管理

IP Management

- IP Space
- New IP object
- Search for IP object
- IPv4 Shortcuts
  - Subnet Blocks
  - Subnets
  - IP Ranges
  - IP Addresses
- IPv6 Shortcuts
  - Subnet Blocks
  - Subnets
  - IP Ranges
  - IP Addresses

欢迎 > 地理位置 > Bordeaux > IP Space > IPv4 Address

IPv4 Addresses

没有对象可显示。

创建一个新的 IPv4 Address

创建一个新的 IPv4 Address

取消 创建

属性 Contacts Documents NAT IPs

General Information

DNS Information

Organization IT Department

Status Allocated

Usage -- 选择一个 --

Note

Requestor -- 选择一个 --

Allocation date YYYY-MM-DD hh:mm:ss

Release date YYYY-MM-DD hh:mm:ss

创建一个新的 IP Address Usage

取消 创建

属性

Organization IT Department

名称 IT manager

Description

取消 创建



## 创建一个新的 IPv4 Address

取消

创建

属性

Contacts

Documents

NAT IPs

### General Information

Organization IT Department

Status Allocated

Usage IT manager

Note

Requestor Anna Gavalda

Allocation date YYYY-MM-DD hh:mm:ss

Release date YYYY-MM-DD hh:mm:ss

### DNS Information

Short Name

DNS Domain -- 选择一个 --

FQDN

Aliases

### IP Information

Subnet -- 选择一个 --

Range -- 选择一个 --

Address

取消

创建



## 创建一个新的 IPv4 Subnet

取消

创建

属性

### General Information

Organization IT Department

Name

Status Allocated

Type

Note

Requestor -- 选择一个 --

Allocation date YYYY-MM-DD hh:mm:ss

Release date YYYY-MM-DD hh:mm:ss

### IP Information

Subnet Block -- 选择一个 --

Subnet IP

Mask -- 选择一个 --

Gateway IP

Broadcast IP

取消

创建

取消

创建

属性

Locations

Contacts

Documents

Global Settings

General Information

IP Information

Organization

IT Department

Delegated from

-- 选择一个 --

Parent

-- 选择一个 --

Name

192.168.1.0

Type

Note

Requestor

-- 选择一个 --

Allocation date

YYYY-MM-DD hh:mm:ss

First IP

192.168.1.0


Last IP

192.168.1.255

取消

创建

写1.1-1.254报错

 创建一个新的 IPv4 Subnet

取消

创建

属性

General Information

IP Information

Organization

IT Department

Name

Status

Allocated

Type

Note

Requestor

Anna Gavalda

Allocation date

YYYY-MM-DD hh:mm:ss

Release date

YYYY-MM-DD hh:mm:ss

Subnet Block

192.168.1.0

Subnet IP

192.168.1.0

Mask

255.255.255.0 - /24

Gateway IP

192.168.1.1

Broadcast IP

192.168.1.255

取消

创建



## 创建一个新的 IPv4 Address

取消

创建

属性

Contacts

Documents

NAT IPs

General Information

OrganizationIT Department

StatusAllocated

UsageIT manager

Note

RequestorAnna Gavalda

Allocation dateYYYY-MM-DD hh:mm:ss

Release dateYYYY-MM-DD hh:mm:ss

DNS Information

Short Name

DNS Domain-- 选择一个 --

FQDN

Aliases

IP Information

Subnet192.168.1.0

Range-- 选择一个 --

Address192.168.1.254

取消

创建



192.168.1.254 - IPv4 Address 创建了.



## IPv4 Address: 192.168.1.254

属性

Contacts

Documents

NAT IPs (0)

CI's (0)

历史

General Information

OrganizationIT Department

StatusAllocated

UsageIT manager

Note

RequestorAnna Gavalda

Allocation date2017-04-24 11:41:50

Release date

DNS Information

Short Name

DNS Domain未定义

FQDN

Aliases

IP Information

Subnet192.168.1.0

Range未定义

Address192.168.1.254

搜索

 IPv4 Addresses

新建... 其他操作 ▾ ✕

